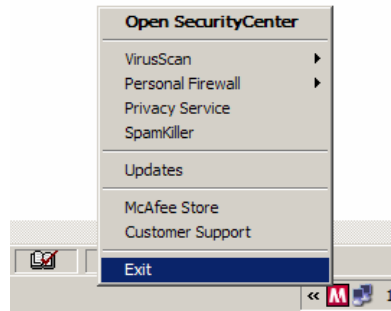


McAfee Firewall is blocking ESP Online.

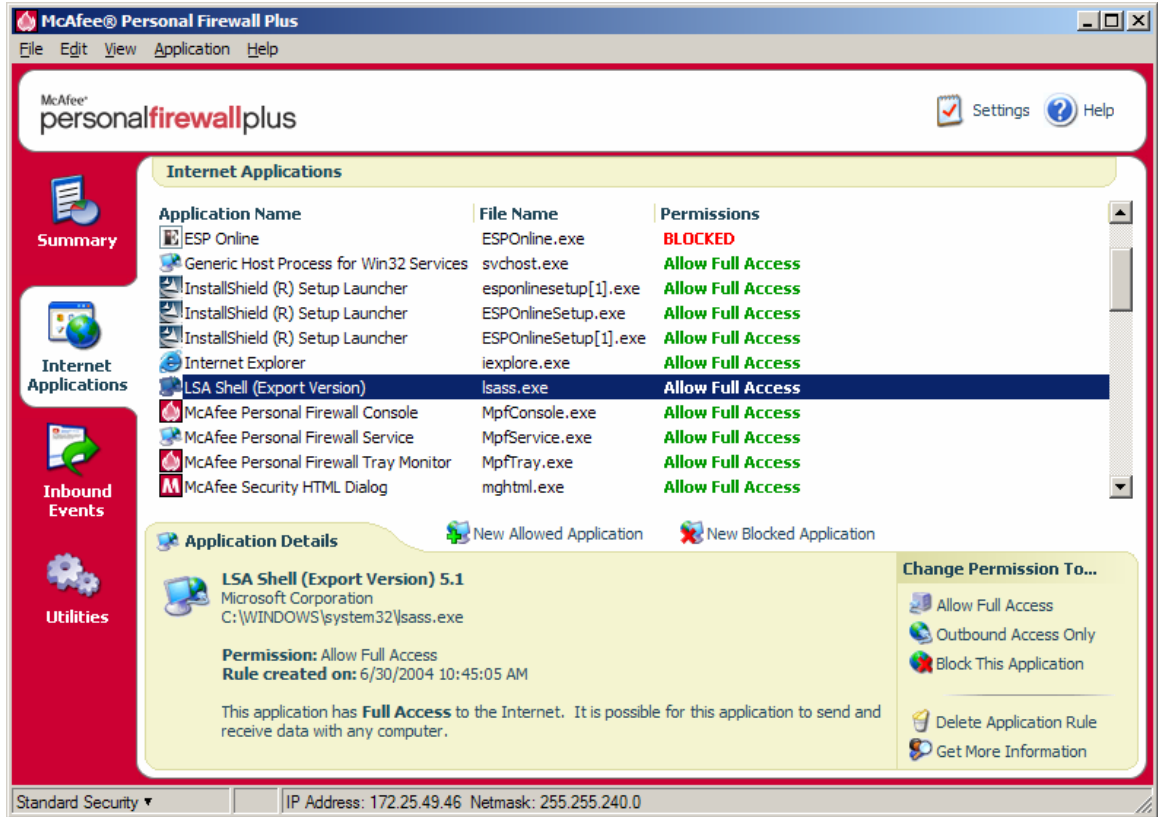
1. Open McAfee Security Center.
 - a. Right Click on the Red M and select Open Security Center.



2. Select Personal Firewall on the left hand side and select View the Internet Application List.



3. Scroll Down the list and look for ESP Online. If you see ESP Online listed as **BLOCKED**...



- Right Click one Blocked and Select Allow Full Access. Close out of McAfee and reopen.

